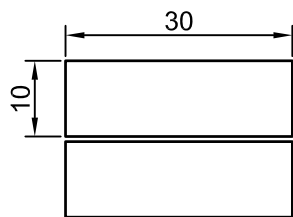
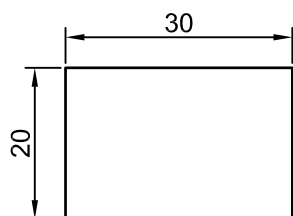


WORTON COURT REVIVAL

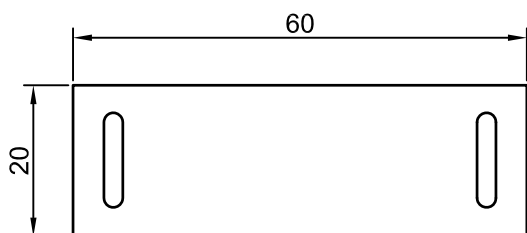
RARE EARTH MAGNET UNITS FOR KADEE COUPLINGS



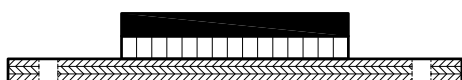
Pair rare earth magnets
(30 x 10mm)



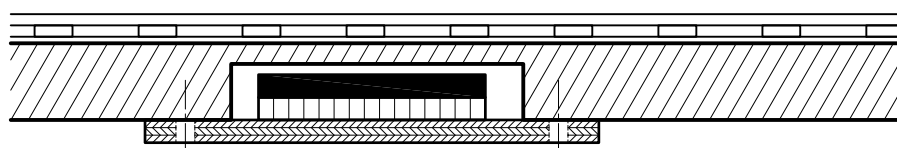
Steel keep plate (3mm)



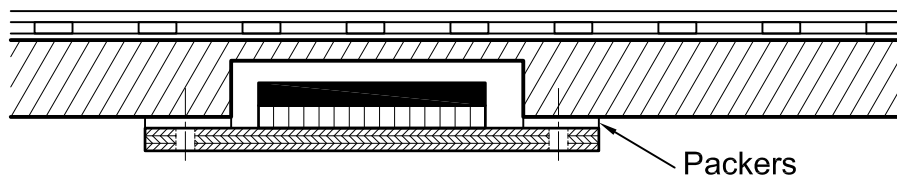
Thin ply base (3mm) with slotted holes
for screws. Slots allow sideways
adjustment of magnets to align with rails.



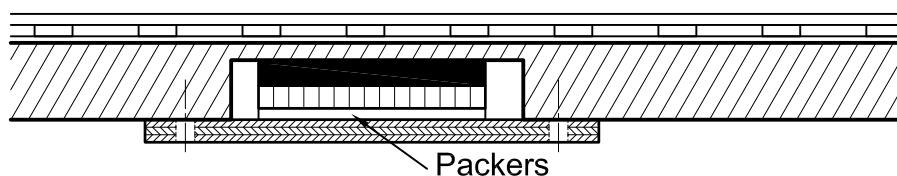
Keep plate, plywood base and any packers
(see below) glued together with epoxy glue.
The magnets snap onto the keepers.



Cut or rout hole in baseboard.
Depth dependant on thickness
of board.



If magnets are too strong,
packers can be inserted to
move magnets away from
track.



If board is thick, packers can be
inserted to move magnets
closer to track. (Needs to be
determined at early stage
through trial and error).